

測試報告 Test Report

號碼(No.) : CY/2013/81300 日期(Date) : 2013/08/29 頁數(Page) : 1 of 4

鈞均企業股份有限公司

SHYANGE PAINT CO., LTD.

桃園縣大園鄉埔心村7鄰76號

NO. 76, 7 LIN, PUHSIN VILL, TAYUAN HSIANG, TAOYUAN HSIEN, TAIWAN, R. O. C.



以下測試樣品係由申請廠商所提供及確認 (The following sample(s) was/were submitted and identified by/on behalf of the applicant as) :

送樣廠商(Sample Submitted By) : 鈞均企業股份有限公司 (SHYANGE PAINT CO., LTD.)
樣品名稱(Sample Description) : 水性通用色母黑色
樣品型號(Style/Item No.) : CTW
收件日期(Sample Receiving Date) : 2013/08/20
測試期間(Testing Period) : 2013/08/20 TO 2013/08/29

=====
測試需求(Test Requested) : 依據客戶指定，檢測重金屬特定遷移量及溶出有機錫。 / As specified by client, to test Migration of heavy metals and Soluble Organic Tin in the submitted sample.

測試方法(Test Method) : 請見下一頁 (Please refer to next pages).

測試結果(Test Results) : 請見下一頁 (Please refer to next pages).


James Lu, Sr. Supervisor
Signed for and on behalf of
SGS TAIWAN LTD
Chemical Laboratory - Taipei

This document is issued by the Company subject to its General Conditions of Service printed overleaf, available on request or accessible at <http://www.sgs.com/en/Terms-and-Conditions.aspx> and, for electronic format documents, subject to Terms and Conditions for Electronic Documents at <http://www.sgs.com/en/Terms-and-Conditions/Termse-Document.aspx>. Attention is drawn to the limitation of liability, indemnification and jurisdiction issues defined therein. Any holder of this document is advised that information contained hereon reflects the Company's findings at the time of its intervention only and within the limits of client's instruction, if any. The Company's sole responsibility is to its Client and this document does not exonerate parties to a transaction from exercising all their rights and obligations under the transaction documents. This document cannot be reproduced, except in full, without prior written approval of the Company. Any unauthorized alteration, forgery or falsification of the content or appearance of this document is unlawful and offenders may be prosecuted to the fullest extent of the law. Unless otherwise stated the results shown in this test report refer only to the sample(s) tested.

測試報告

Test Report

號碼(No.) : CY/2013/81300 日期(Date) : 2013/08/29 頁數(Page) : 2 of 4

鈞均企業股份有限公司

SHYANGE PAINT CO., LTD.

桃園縣大園鄉埔心村7鄰76號

NO. 76, 7 LIN, PUHSIN VILL, TAYUAN HSIANG, TAOYUAN HSIEN, TAIWAN, R. O. C.



測試結果(Test Results)

測試部位(PART NAME) No.1 : 黑色液體 (BLACK LIQUID)

測試項目 (Test Items)	單位 (Unit)	測試方法 (Method)	方法偵測 極限值 (MDL)	結果 (Result)
				No.1
甲基錫 / Methyl tin (MeT)	mg/kg	參考 EN 71 Part 3:2013, 以氣相層析/質譜儀檢測. / With reference to EN 71 Part 3:2013. Analysis was performed by GC/MS.	0.14	n.d.
二丙基錫 / Di-n-propyl tin	mg/kg		0.14	n.d.
單丁基錫 / Butyl tin (BuT)	mg/kg		0.14	n.d.
二丁基錫 / Dibutyl Tin (DBT)	mg/kg		0.14	n.d.
三丁基錫 / Tributyl Tin (TBT)	mg/kg		0.14	n.d.
單辛基錫 / n-Octyl tin (MOT)	mg/kg		0.14	n.d.
四丁基錫 / Tetrabutyltin (TeBT)	mg/kg		0.14	n.d.
二苯基錫 / Diphenyltin (DphT)	mg/kg		0.14	n.d.
二辛基錫 / Di-n-octyl tin (DOT)	mg/kg		0.14	n.d.
三苯基錫 / Triphenyl Tin (TphT)	mg/kg		0.14	n.d.
溶出有機錫 / Soluble Organic	mg/kg			-
溶出鋁 / Soluble Aluminum (Al)	mg/kg	參考 EN 71 Part 3:2013, 以感應耦合電漿質譜儀檢測. / With reference to EN 71 Part 3:2013. Analysis was performed by ICP-MS.	50	n.d.
溶出銻 / Soluble Antimony (Sb)	mg/kg		1	n.d.
溶出砷 / Soluble Arsenic (As)	mg/kg		0.5	n.d.
溶出鋇 / Soluble Barium (Ba)	mg/kg		50	n.d.
溶出硼 / Soluble Boron (B)	mg/kg		50	n.d.
溶出鎘 / Soluble Cadmium (Cd)	mg/kg		0.1	n.d.
溶出鈷 / Soluble Cobalt (Co)	mg/kg		0.5	n.d.
溶出銅 / Soluble Copper (Cu)	mg/kg		50	n.d.
溶出鉛 / Soluble Lead (Pb)	mg/kg		0.5	n.d.
溶出錳 / Soluble Manganese (Mn)	mg/kg		50	n.d.
溶出汞 / Soluble Mercury (Hg)	mg/kg		0.5	n.d.
溶出鎳 / Soluble Nickel (Ni)	mg/kg		10	n.d.
溶出硒 / Soluble Selenium (Se)	mg/kg		5	n.d.
溶出鈾 / Soluble Strontium (Sr)	mg/kg		50	n.d.
溶出錫 / Soluble Tin (Sn)	mg/kg		0.08	n.d.
溶出鋅 / Soluble Zinc (Zn)	mg/kg	50	n.d.	

This document is issued by the Company subject to its General Conditions of Service printed overleaf, available on request or accessible at <http://www.sgs.com/en/Terms-and-Conditions.aspx> and, for electronic format documents, subject to Terms and Conditions for Electronic Documents at <http://www.sgs.com/en/Terms-and-Conditions/Termse-Document.aspx>. Attention is drawn to the limitation of liability, indemnification and jurisdiction issues defined therein. Any holder of this document is advised that information contained hereon reflects the Company's findings at the time of its intervention only and within the limits of client's instruction, if any. The Company's sole responsibility is to its Client and this document does not exonerate parties to a transaction from exercising all their rights and obligations under the transaction documents. This document cannot be reproduced, except in full, without prior written approval of the Company. Any unauthorized alteration, forgery or falsification of the content or appearance of this document is unlawful and offenders may be prosecuted to the fullest extent of the law. Unless otherwise stated the results shown in this test report refer only to the sample(s) tested.

測試報告

Test Report

號碼(No.) : CY/2013/81300 日期(Date) : 2013/08/29 頁數(Page) : 3 of 4

鈞均企業股份有限公司

SHYANGE PAINT CO., LTD.

桃園縣大園鄉埔心村7鄰76號

NO. 76, 7 LIN, PUHSIN VILL, TAYUAN HSIANG, TAOYUAN HSIEN, TAIWAN, R. O. C.



測試項目 (Test Items)	單位 (Unit)	測試方法 (Method)	方法偵測 極限值 (MDL)	結果 (Result)
				No.1
溶出三價鉻 / Soluble Chromium (III) (Cr (III))	mg/kg	參考 EN 71 Part 3:2013, 以液相 層析感應耦合電漿質譜儀檢測。 / With reference to EN 71 Part 3:2013. Analysis was performed by LC-ICP-MS.	1	n.d.
溶出六價鉻 / Soluble Chromium (VI) (Cr (VI))	mg/kg		0.005	n.d.

備註(Note) :

1. mg/kg = ppm ; 0.1wt% = 1000ppm
2. n.d. = Not Detected (未檢出)
3. MDL = Method Detection Limit (方法偵測極限值)
4. "-" = Not Regulated (無規格值)

測試報告 Test Report

號碼(No.) : CY/2013/81300 日期(Date) : 2013/08/29 頁數(Page) : 4 of 4

鈞均企業股份有限公司

SHYANGE PAINT CO., LTD.

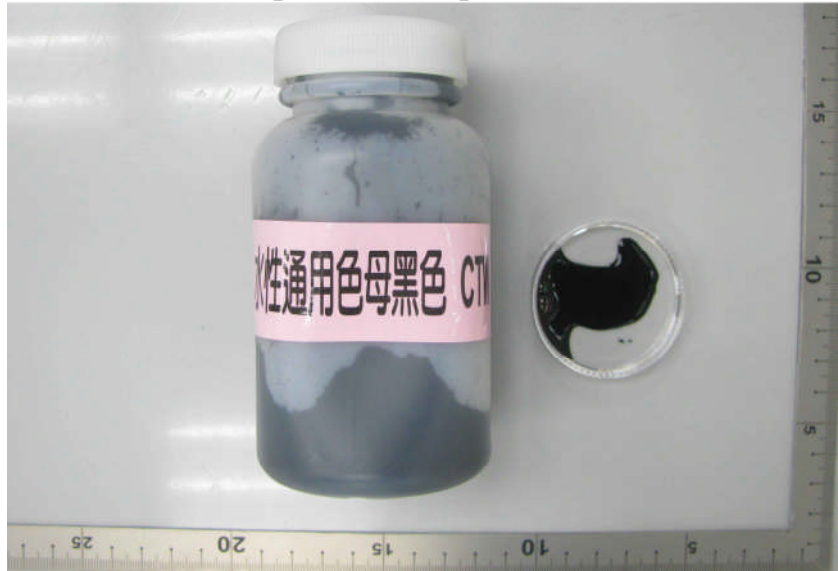
桃園縣大園鄉埔心村7鄰76號

NO. 76, 7 LIN, PUHSIN VILL, TAYUAN HSIANG, TAOYUAN HSIEN, TAIWAN, R. O. C.



* 照片中如有箭頭標示，則表示為實際檢測之樣品/部位。 *
(The tested sample / part is marked by an arrow if it's shown on the photo.)

CY/2013/81300



** 報告結尾(End of Report) **