

測試報告

Test Report

號碼(No.) : CE/2016/80913

日期(Date) : 2016/08/10

頁數(Page): 1 of 20

鈞均企業股份有限公司
SHYANGE PAINT CO., LTD.
桃園市大園區埔心村7鄰76號



NO. 76, 7LIN, PUHSIN VILL, TAYUAN DISTRICT, TAOYUAN CITY, TAIWAN, R. O. C.

以下測試樣品係由申請廠商所提供及確認 (The following sample(s) was/were submitted and identified by/on behalf of the applicant as) :

送樣廠商(Sample Submitted By) : 鈞均企業股份有限公司 (SHYANGE PAINT CO., LTD.)
樣品名稱(Sample Description) : 水性透明漆
樣品型號(Style/Item No.) : WU-306G
收件日期(Sample Receiving Date) : 2016/08/03
測試期間(Testing Period) : 2016/08/03 TO 2016/08/10

測試需求(Test Requested) :

- (1) 依據客戶指定，參考RoHS2011/65/EU Annex II及其修訂指令(EU) 2015/863測試鎘、鉛、汞、六價鉻，DBP, BBP, DEHP, DIBP. (As specified by client, with reference to RoHS 2011/65/EU Annex II and amending Directive (EU) 2015/863 to determine Cadmium, Lead, Mercury, Cr(VI), DBP, BBP, DEHP, DIBP contents in the submitted sample.)
- (2) 其他測試項目請見下一頁。(Please refer to next pages for the other item(s).)

測試結果(Test Results) : 請見下一頁 (Please refer to next pages).


Troy Chang, Manager - Tech
Signed for and on behalf of
SGS TAIWAN LTD.
Chemical Laboratory - Taipei



測試報告

Test Report

號碼(No.) : CE/2016/80913

日期(Date) : 2016/08/10

頁數(Page): 2 of 20

鈞均企業股份有限公司
SHYANGE PAINT CO., LTD.
桃園市大園區埔心村7鄰76號
NO. 76, 7LIN, PUHSIN VILL, TAYUAN DISTRICT, TAOYUAN CITY, TAIWAN, R. O. C.



測試結果(Test Results)

測試部位(PART NAME)No.1 : 白色液體 (WHITE LIQUID)

測試項目 (Test Items)	單位 (Unit)	測試方法 (Method)	方法偵測 極限值 (MDL)	結果 (Result)
				No. 1
鎘 / Cadmium (Cd)	mg/kg	參考IEC 62321-5 (2013), 以感應耦合電漿原子發射光譜儀檢測. / With reference to IEC 62321-5 (2013) and performed by ICP-AES.	2	n. d.
鉛 / Lead (Pb)	mg/kg	參考IEC 62321-5 (2013), 以感應耦合電漿原子發射光譜儀檢測. / With reference to IEC 62321-5 (2013) and performed by ICP-AES.	2	n. d.
汞 / Mercury (Hg)	mg/kg	參考IEC 62321-4 (2013), 以感應耦合電漿原子發射光譜儀檢測. / With reference to IEC 62321-4 (2013) and performed by ICP-AES.	2	n. d.
六價鉻 / Hexavalent Chromium Cr(VI)	mg/kg	參考IEC 62321 (2008), 以UV-VIS檢測. / With reference to IEC 62321 (2008) and performed by UV-VIS.	2	n. d.
銻 / Antimony (Sb)	mg/kg	參考US EPA 3052 (1996), 以感應耦合電漿原子發射光譜儀檢測. / With reference to US EPA 3052 (1996). Analysis was performed by ICP-AES.	2	n. d.
砷 / Arsenic (As)	mg/kg	參考US EPA 3052 (1996), 以感應耦合電漿原子發射光譜儀檢測. / With reference to US EPA 3052 (1996). Analysis was performed by ICP-AES.	2	n. d.
鋇 / Barium (Ba)	mg/kg	參考US EPA 3052 (1996), 以感應耦合電漿原子發射光譜儀檢測. / With reference to US EPA 3052 (1996). Analysis was performed by ICP-AES.	2	n. d.

This document is issued by the Company subject to its General Conditions of Service printed overleaf, available on request or accessible at <http://www.sgs.com/en/Terms-and-Conditions.aspx> and, for electronic format documents, subject to Terms and Conditions for Electronic Documents at <http://www.sgs.com/en/Terms-and-Conditions/Termse-Document.aspx>. Attention is drawn to the limitation of liability, indemnification and jurisdiction issues defined therein. Any holder of this document is advised that information contained hereon reflects the Company's findings at the time of its intervention only and within the limits of client's instruction, if any. The Company's sole responsibility is to its Client and this document does not exonerate parties to a transaction from exercising all their rights and obligations under the transaction documents. This document cannot be reproduced, except in full, without prior written approval of the Company. Any unauthorized alteration, forgery or falsification of the content or appearance of this document is unlawful and offenders may be prosecuted to the fullest extent of the law. Unless otherwise stated the results shown in this test report refer only to the sample(s) tested.

測試報告

Test Report

號碼(No.) : CE/2016/80913

日期(Date) : 2016/08/10

頁數(Page): 3 of 20

鈞均企業股份有限公司
SHYANGE PAINT CO., LTD.
桃園市大園區埔心村7鄰76號
NO. 76, 7LIN, PUHSIN VILL, TAYUAN DISTRICT, TAOYUAN CITY, TAIWAN, R. O. C.



測試項目 (Test Items)	單位 (Unit)	測試方法 (Method)	方法偵測 極限值 (MDL)	結果 (Result)
				No. 1
鉻 / Chromium (Cr)	mg/kg	參考US EPA 3052 (1996), 以感應耦合電漿原子發射光譜儀檢測. / With reference to US EPA 3052 (1996). Analysis was performed by ICP-AES.	2	n. d.
硒 / Selenium (Se)	mg/kg	參考US EPA 3052 (1996), 以感應耦合電漿原子發射光譜儀檢測. / With reference to US EPA 3052 (1996). Analysis was performed by ICP-AES.	2	n. d.
磷 / Phosphorus (P)	mg/kg	參考US EPA 3052 (1996), 以感應耦合電漿原子發射光譜儀檢測. / With reference to US EPA 3052 (1996). Analysis was performed by ICP-AES.	2	n. d.
鈹 / Beryllium (Be)	mg/kg	參考US EPA 3052 (1996), 以感應耦合電漿原子發射光譜儀檢測. / With reference to US EPA 3052 (1996). Analysis was performed by ICP-AES.	2	n. d.
甲醛 / Formaldehyde (CAS No. : 50-00-0)	mg/kg	參考ISO 17226-1(2008), 以高效液相層析儀/二極體陣列偵測器檢測. / With reference to ISO 17226-1(2008). Analysis was performed by HPLC/DAD.	3	n. d.
鄰苯二甲酸丁苯甲酯 / BBP (Butyl Benzyl phthalate) (CAS No. : 85-68-7)	mg/kg	參考IEC 62321-8/CD (2013), 以氣相層析儀/質譜儀檢測. / With reference to IEC 62321-8/CD (2013). Analysis was performed by GC/MS.	50	n. d.
鄰苯二甲酸二丁酯 / DBP (Dibutyl phthalate) (CAS No. : 84-74-2)	mg/kg		50	n. d.
鄰苯二甲酸二(2-乙基己基)酯 / DEHP (Di-(2-ethylhexyl) phthalate) (CAS No. : 117-81-7)	mg/kg		50	n. d.
鄰苯二甲酸二異丁酯 / DIBP (Di-isobutyl phthalate) (CAS No. : 84-69-5)	mg/kg		50	n. d.

This document is issued by the Company subject to its General Conditions of Service printed overleaf, available on request or accessible at <http://www.sgs.com/en/Terms-and-Conditions.aspx> and, for electronic format documents, subject to Terms and Conditions for Electronic Documents at <http://www.sgs.com/en/Terms-and-Conditions/Termse-Documents.aspx>. Attention is drawn to the limitation of liability, indemnification and jurisdiction issues defined therein. Any holder of this document is advised that information contained hereon reflects the Company's findings at the time of its intervention only and within the limits of client's instruction, if any. The Company's sole responsibility is to its Client and this document does not exonerate parties to a transaction from exercising all their rights and obligations under the transaction documents. This document cannot be reproduced, except in full, without prior written approval of the Company. Any unauthorized alteration, forgery or falsification of the content or appearance of this document is unlawful and offenders may be prosecuted to the fullest extent of the law. Unless otherwise stated the results shown in this test report refer only to the sample(s) tested.

測試報告

Test Report

號碼(No.) : CE/2016/80913

日期(Date) : 2016/08/10

頁數(Page): 4 of 20

鈞均企業股份有限公司
SHYANGE PAINT CO., LTD.
桃園市大園區埔心村7鄰76號
NO. 76, 7LIN, PUHSIN VILL, TAYUAN DISTRICT, TAOYUAN CITY, TAIWAN, R. O. C.



測試項目 (Test Items)	單位 (Unit)	測試方法 (Method)	方法偵測 極限值 (MDL)	結果 (Result)
				No. 1
鄰苯二甲酸二異癸酯 / DIDP (Di-isodecyl phthalate) (CAS No.: 26761-40-0; 68515-49-1)	mg/kg	參考IEC 62321-8/CD (2013), 以氣相層析儀/質譜儀檢測. / With reference to IEC 62321-8/CD (2013). Analysis was performed by GC/MS.	50	n. d.
鄰苯二甲酸二異壬酯 / DINP (Di-isononyl phthalate) (CAS No.: 28553-12-0; 68515-48-0)	mg/kg		50	n. d.
鄰苯二甲酸二正辛酯 / DNOP (Di-n-octyl phthalate) (CAS No.: 117-84-0)	mg/kg		50	n. d.
三丁基錫 / Tributyl Tin (TBT)	mg/kg	參考ISO 17353 (2004), 以氣相層析儀/火焰光度偵測器檢測. / With reference to ISO 17353 (2004). Analysis was performed by GC/FPD.	0.03	n. d.
三苯基錫 / Triphenyl Tin (TphT)	mg/kg		0.03	n. d.
氧化雙三丁基錫 / Bis(tributyltin)oxide (TBTO)***(CAS No.: 56-35-9)	mg/kg		-	n. d.
二丁基錫 / Dibutyl Tin (DBT)	mg/kg		0.03	n. d.
二辛基錫 / Dioctyl Tin (DOT)	mg/kg		0.03	n. d.
揮發性有機物質 (VOCs) / Volatile organic compounds (VOCs)				
1, 1, 1, 2-四氯乙烷 / 1, 1, 1, 2-Tetrachloroethane (CAS No.: 630-20-6)	mg/kg	參考US EPA 5021A (2014), 以氣相層析/質譜儀檢測. / With reference to US EPA 5021A (2014). Analysis was performed by GC/MS.	10	n. d.
1, 1, 1-三氯乙烷 / 1, 1, 1-Trichloroethane (CAS No.: 71-55-6)	mg/kg	參考US EPA 5021A (2014), 以氣相層析/質譜儀檢測. / With reference to US EPA 5021A (2014). Analysis was performed by GC/MS.	10	n. d.
1, 1, 2, 2-四氯乙烷 / 1, 1, 2, 2-Tetrachloroethane (CAS No.: 79-34-5)	mg/kg	參考US EPA 5021A (2014), 以氣相層析/質譜儀檢測. / With reference to US EPA 5021A (2014). Analysis was performed by GC/MS.	10	n. d.

This document is issued by the Company subject to its General Conditions of Service printed overleaf, available on request or accessible at <http://www.sgs.com/en/Terms-and-Conditions.aspx> and, for electronic format documents, subject to Terms and Conditions for Electronic Documents at <http://www.sgs.com/en/Terms-and-Conditions/Termse-Document.aspx>. Attention is drawn to the limitation of liability, indemnification and jurisdiction issues defined therein. Any holder of this document is advised that information contained hereon reflects the Company's findings at the time of its intervention only and within the limits of client's instruction, if any. The Company's sole responsibility is to its Client and this document does not exonerate parties to a transaction from exercising all their rights and obligations under the transaction documents. This document cannot be reproduced, except in full, without prior written approval of the Company. Any unauthorized alteration, forgery or falsification of the content or appearance of this document is unlawful and offenders may be prosecuted to the fullest extent of the law. Unless otherwise stated the results shown in this test report refer only to the sample(s) tested.

測試報告

Test Report

號碼(No.) : CE/2016/80913

日期(Date) : 2016/08/10

頁數(Page): 5 of 20

鈞均企業股份有限公司
 SHYANGE PAINT CO., LTD.
 桃園市大園區埔心村7鄰76號
 NO. 76, 7LIN, PUHSIN VILL, TAYUAN DISTRICT, TAOYUAN CITY, TAIWAN, R. O. C.



測試項目 (Test Items)	單位 (Unit)	測試方法 (Method)	方法偵測 極限值 (MDL)	結果 (Result)
				No. 1
1,1,2-三氯乙烷 / 1,1,2-Trichloroethane (CAS No. : 79-00-5)	mg/kg	參考US EPA 5021A (2014), 以氣相層析/質譜儀檢測. / With reference to US EPA 5021A (2014). Analysis was performed by GC/MS.	10	n. d.
1,1-二氯乙烯 / 1,1-Dichloroethene (CAS No. : 75-35-4)	mg/kg	參考US EPA 5021A (2014), 以氣相層析/質譜儀檢測. / With reference to US EPA 5021A (2014). Analysis was performed by GC/MS.	10	n. d.
1,1-二氯乙烷 / 1,1-Dichloroethane (CAS No. : 75-34-3)	mg/kg	參考US EPA 5021A (2014), 以氣相層析/質譜儀檢測. / With reference to US EPA 5021A (2014). Analysis was performed by GC/MS.	10	n. d.
1,1-二氯丙烯 / 1,1-Dichloropropene (CAS No. : 563-58-6)	mg/kg	參考US EPA 5021A (2014), 以氣相層析/質譜儀檢測. / With reference to US EPA 5021A (2014). Analysis was performed by GC/MS.	10	n. d.
1,2,3-三氯苯 / 1,2,3-Trichlorobenzene (CAS No. : 87-61-6)	mg/kg	參考US EPA 5021A (2014), 以氣相層析/質譜儀檢測. / With reference to US EPA 5021A (2014). Analysis was performed by GC/MS.	10	n. d.
1,2,3-三氯丙烷 / 1,2,3-Trichloropropane (CAS No. : 96-18-4)	mg/kg	參考US EPA 5021A (2014), 以氣相層析/質譜儀檢測. / With reference to US EPA 5021A (2014). Analysis was performed by GC/MS.	10	n. d.
1,2,4-三氯苯 / 1,2,4-Trichlorobenzene (CAS No. : 120-82-1)	mg/kg	參考US EPA 5021A (2014), 以氣相層析/質譜儀檢測. / With reference to US EPA 5021A (2014). Analysis was performed by GC/MS.	10	n. d.

This document is issued by the Company subject to its General Conditions of Service printed overleaf, available on request or accessible at <http://www.sgs.com/en/Terms-and-Conditions.aspx> and, for electronic format documents, subject to Terms and Conditions for Electronic Documents at <http://www.sgs.com/en/Terms-and-Conditions/Termse-Documents.aspx>. Attention is drawn to the limitation of liability, indemnification and jurisdiction issues defined therein. Any holder of this document is advised that information contained hereon reflects the Company's findings at the time of its intervention only and within the limits of client's instruction, if any. The Company's sole responsibility is to its Client and this document does not exonerate parties to a transaction from exercising all their rights and obligations under the transaction documents. This document cannot be reproduced, except in full, without prior written approval of the Company. Any unauthorized alteration, forgery or falsification of the content or appearance of this document is unlawful and offenders may be prosecuted to the fullest extent of the law. Unless otherwise stated the results shown in this test report refer only to the sample(s) tested.

測試報告

Test Report

號碼(No.) : CE/2016/80913

日期(Date) : 2016/08/10

頁數(Page): 6 of 20

鈞均企業股份有限公司
SHYANGE PAINT CO., LTD.
桃園市大園區埔心村7鄰76號
NO. 76, 7LIN, PUHSIN VILL, TAYUAN DISTRICT, TAOYUAN CITY, TAIWAN, R. O. C.



測試項目 (Test Items)	單位 (Unit)	測試方法 (Method)	方法偵測 極限值 (MDL)	結果 (Result)
				No. 1
1, 2, 4-三甲基苯 / 1, 2, 4-Trimethylbenzene (CAS No. : 95-63-6)	mg/kg	參考US EPA 5021A (2014), 以氣相層析/質譜儀檢測. / With reference to US EPA 5021A (2014). Analysis was performed by GC/MS.	10	n. d.
1, 2-二溴-3-氯丙烷 / 1, 2-Dibromo-3-chloropropane (CAS No. : 96-12-8)	mg/kg	參考US EPA 5021A (2014), 以氣相層析/質譜儀檢測. / With reference to US EPA 5021A (2014). Analysis was performed by GC/MS.	10	n. d.
1, 2-二溴乙烷 / 1, 2-Dibromoethane (CAS No. : 106-93-4)	mg/kg	參考US EPA 5021A (2014), 以氣相層析/質譜儀檢測. / With reference to US EPA 5021A (2014). Analysis was performed by GC/MS.	10	n. d.
1, 2-二氯苯 / 1, 2-Dichlorobenzene (CAS No. : 95-50-1)	mg/kg	參考US EPA 5021A (2014), 以氣相層析/質譜儀檢測. / With reference to US EPA 5021A (2014). Analysis was performed by GC/MS.	10	n. d.
1, 2-二氯乙烷 / 1, 2-Dichloroethane (CAS No. : 107-06-2)	mg/kg	參考US EPA 5021A (2014), 以氣相層析/質譜儀檢測. / With reference to US EPA 5021A (2014). Analysis was performed by GC/MS.	10	n. d.
1, 2-二氯丙烷 / 1, 2-Dichloropropane (CAS No. : 78-87-5)	mg/kg	參考US EPA 5021A (2014), 以氣相層析/質譜儀檢測. / With reference to US EPA 5021A (2014). Analysis was performed by GC/MS.	10	n. d.
1, 3, 5-三甲基苯 / 1, 3, 5-Trimethylbenzene (CAS No. : 108-67-8)	mg/kg	參考US EPA 5021A (2014), 以氣相層析/質譜儀檢測. / With reference to US EPA 5021A (2014). Analysis was performed by GC/MS.	10	n. d.

This document is issued by the Company subject to its General Conditions of Service printed overleaf, available on request or accessible at <http://www.sgs.com/en/Terms-and-Conditions.aspx> and, for electronic format documents, subject to Terms and Conditions for Electronic Documents at <http://www.sgs.com/en/Terms-and-Conditions/Termse-Document.aspx>. Attention is drawn to the limitation of liability, indemnification and jurisdiction issues defined therein. Any holder of this document is advised that information contained hereon reflects the Company's findings at the time of its intervention only and within the limits of client's instruction, if any. The Company's sole responsibility is to its Client and this document does not exonerate parties to a transaction from exercising all their rights and obligations under the transaction documents. This document cannot be reproduced, except in full, without prior written approval of the Company. Any unauthorized alteration, forgery or falsification of the content or appearance of this document is unlawful and offenders may be prosecuted to the fullest extent of the law. Unless otherwise stated the results shown in this test report refer only to the sample(s) tested.

測試報告

Test Report

號碼(No.) : CE/2016/80913

日期(Date) : 2016/08/10

頁數(Page): 7 of 20

鈞均企業股份有限公司
SHYANGE PAINT CO., LTD.
桃園市大園區埔心村7鄰76號
NO. 76, 7LIN, PUHSIN VILL, TAYUAN DISTRICT, TAOYUAN CITY, TAIWAN, R. O. C.



測試項目 (Test Items)	單位 (Unit)	測試方法 (Method)	方法偵測 極限值 (MDL)	結果 (Result)
				No. 1
1,3-二氯苯 / 1,3-Dichlorobenzene (CAS No. : 541-73-1)	mg/kg	參考US EPA 5021A (2014), 以氣相層析/質譜儀檢測. / With reference to US EPA 5021A (2014). Analysis was performed by GC/MS.	10	n. d.
1,3-二氯丙烷 / 1,3-Dichloropropane (CAS No. : 142-28-9)	mg/kg	參考US EPA 5021A (2014), 以氣相層析/質譜儀檢測. / With reference to US EPA 5021A (2014). Analysis was performed by GC/MS.	10	n. d.
1,4-二氯苯 / 1,4-Dichlorobenzene (CAS No. : 106-46-7)	mg/kg	參考US EPA 5021A (2014), 以氣相層析/質譜儀檢測. / With reference to US EPA 5021A (2014). Analysis was performed by GC/MS.	10	n. d.
2,2-二氯丙烷 / 2,2-Dichloropropane (CAS No. : 594-20-7)	mg/kg	參考US EPA 5021A (2014), 以氣相層析/質譜儀檢測. / With reference to US EPA 5021A (2014). Analysis was performed by GC/MS.	10	n. d.
2-氯甲苯 / 2-Chlorotoluene (CAS No. : 95-49-8)	mg/kg	參考US EPA 5021A (2014), 以氣相層析/質譜儀檢測. / With reference to US EPA 5021A (2014). Analysis was performed by GC/MS.	10	n. d.
4-氯甲苯 / 4-Chlorotoluene (CAS No. : 106-43-4)	mg/kg	參考US EPA 5021A (2014), 以氣相層析/質譜儀檢測. / With reference to US EPA 5021A (2014). Analysis was performed by GC/MS.	10	n. d.
苯 / Benzene (CAS No. : 71-43-2)	mg/kg	參考US EPA 5021A (2014), 以氣相層析/質譜儀檢測. / With reference to US EPA 5021A (2014). Analysis was performed by GC/MS.	10	n. d.

This document is issued by the Company subject to its General Conditions of Service printed overleaf, available on request or accessible at <http://www.sgs.com/en/Terms-and-Conditions.aspx> and, for electronic format documents, subject to Terms and Conditions for Electronic Documents at <http://www.sgs.com/en/Terms-and-Conditions/Termse-Documents.aspx>. Attention is drawn to the limitation of liability, indemnification and jurisdiction issues defined therein. Any holder of this document is advised that information contained hereon reflects the Company's findings at the time of its intervention only and within the limits of client's instruction, if any. The Company's sole responsibility is to its Client and this document does not exonerate parties to a transaction from exercising all their rights and obligations under the transaction documents. This document cannot be reproduced, except in full, without prior written approval of the Company. Any unauthorized alteration, forgery or falsification of the content or appearance of this document is unlawful and offenders may be prosecuted to the fullest extent of the law. Unless otherwise stated the results shown in this test report refer only to the sample(s) tested.

測試報告

Test Report

號碼(No.) : CE/2016/80913

日期(Date) : 2016/08/10

頁數(Page): 8 of 20

鈞均企業股份有限公司
SHYANGE PAINT CO., LTD.
桃園市大園區埔心村7鄰76號
NO. 76, 7LIN, PUHSIN VILL, TAYUAN DISTRICT, TAOYUAN CITY, TAIWAN, R. O. C.



測試項目 (Test Items)	單位 (Unit)	測試方法 (Method)	方法偵測 極限值 (MDL)	結果 (Result)
				No. 1
溴苯 / Bromobenzene (CAS No. : 108-86-1)	mg/kg	參考US EPA 5021A (2014), 以氣相層析/質譜儀檢測. / With reference to US EPA 5021A (2014). Analysis was performed by GC/MS.	10	n. d.
溴氯甲烷 / Bromochloromethane (CAS No. : 74-97-5)	mg/kg	參考US EPA 5021A (2014), 以氣相層析/質譜儀檢測. / With reference to US EPA 5021A (2014). Analysis was performed by GC/MS.	10	n. d.
一溴二氯甲烷 / Bromodichloromethane (CAS No. : 75-27-4)	mg/kg	參考US EPA 5021A (2014), 以氣相層析/質譜儀檢測. / With reference to US EPA 5021A (2014). Analysis was performed by GC/MS.	10	n. d.
溴仿 / Bromoform (CAS No. : 75-25-2)	mg/kg	參考US EPA 5021A (2014), 以氣相層析/質譜儀檢測. / With reference to US EPA 5021A (2014). Analysis was performed by GC/MS.	10	n. d.
溴甲烷 / Bromomethane (CAS No. : 74-83-9)	mg/kg	參考US EPA 5021A (2014), 以氣相層析/質譜儀檢測. / With reference to US EPA 5021A (2014). Analysis was performed by GC/MS.	10	n. d.
四氯甲烷 (四氯化碳) / Carbon tetrachloride (CAS No. : 56-23-5)	mg/kg	參考US EPA 5021A (2014), 以氣相層析/質譜儀檢測. / With reference to US EPA 5021A (2014). Analysis was performed by GC/MS.	10	n. d.
氯苯 / Chlorobenzene (CAS No. : 108-90-7)	mg/kg	參考US EPA 5021A (2014), 以氣相層析/質譜儀檢測. / With reference to US EPA 5021A (2014). Analysis was performed by GC/MS.	10	n. d.

This document is issued by the Company subject to its General Conditions of Service printed overleaf, available on request or accessible at <http://www.sgs.com/en/Terms-and-Conditions.aspx> and, for electronic format documents, subject to Terms and Conditions for Electronic Documents at <http://www.sgs.com/en/Terms-and-Conditions/Termse-Documents.aspx>. Attention is drawn to the limitation of liability, indemnification and jurisdiction issues defined therein. Any holder of this document is advised that information contained hereon reflects the Company's findings at the time of its intervention only and within the limits of client's instruction, if any. The Company's sole responsibility is to its Client and this document does not exonerate parties to a transaction from exercising all their rights and obligations under the transaction documents. This document cannot be reproduced, except in full, without prior written approval of the Company. Any unauthorized alteration, forgery or falsification of the content or appearance of this document is unlawful and offenders may be prosecuted to the fullest extent of the law. Unless otherwise stated the results shown in this test report refer only to the sample(s) tested.

測試報告

Test Report

號碼(No.) : CE/2016/80913

日期(Date) : 2016/08/10

頁數(Page): 9 of 20

鈞均企業股份有限公司
SHYANGE PAINT CO., LTD.
桃園市大園區埔心村7鄰76號
NO. 76, 7LIN, PUHSIN VILL, TAYUAN DISTRICT, TAOYUAN CITY, TAIWAN, R. O. C.



測試項目 (Test Items)	單位 (Unit)	測試方法 (Method)	方法偵測 極限值 (MDL)	結果 (Result)
				No. 1
氯乙烷 / Chloroethane (CAS No. : 75-00-3)	mg/kg	參考US EPA 5021A (2014), 以氣相層析/質譜儀檢測. / With reference to US EPA 5021A (2014). Analysis was performed by GC/MS.	10	n. d.
氯仿 / Chloroform (CAS No. : 67-66-3)	mg/kg	參考US EPA 5021A (2014), 以氣相層析/質譜儀檢測. / With reference to US EPA 5021A (2014). Analysis was performed by GC/MS.	10	n. d.
氯甲烷 / Chloromethane (CAS No. : 74-87-3)	mg/kg	參考US EPA 5021A (2014), 以氣相層析/質譜儀檢測. / With reference to US EPA 5021A (2014). Analysis was performed by GC/MS.	10	n. d.
順-1,2-二氯乙烯 / cis-1,2-Dichloroethene (CAS No. : 156-59-2)	mg/kg	參考US EPA 5021A (2014), 以氣相層析/質譜儀檢測. / With reference to US EPA 5021A (2014). Analysis was performed by GC/MS.	10	n. d.
順-1,3-二氯丙烯 / cis-1,3-Dichloropropene (CAS No. : 10061-01-5)	mg/kg	參考US EPA 5021A (2014), 以氣相層析/質譜儀檢測. / With reference to US EPA 5021A (2014). Analysis was performed by GC/MS.	10	n. d.
一氯二溴甲烷 / Dibromochloromethane (CAS No. : 124-48-1)	mg/kg	參考US EPA 5021A (2014), 以氣相層析/質譜儀檢測. / With reference to US EPA 5021A (2014). Analysis was performed by GC/MS.	10	n. d.
二溴甲烷 / Dibromomethane (CAS No. : 74-95-3)	mg/kg	參考US EPA 5021A (2014), 以氣相層析/質譜儀檢測. / With reference to US EPA 5021A (2014). Analysis was performed by GC/MS.	10	n. d.

This document is issued by the Company subject to its General Conditions of Service printed overleaf, available on request or accessible at <http://www.sgs.com/en/Terms-and-Conditions.aspx> and, for electronic format documents, subject to Terms and Conditions for Electronic Documents at <http://www.sgs.com/en/Terms-and-Conditions/Termse-Documents.aspx>. Attention is drawn to the limitation of liability, indemnification and jurisdiction issues defined therein. Any holder of this document is advised that information contained hereon reflects the Company's findings at the time of its intervention only and within the limits of client's instruction, if any. The Company's sole responsibility is to its Client and this document does not exonerate parties to a transaction from exercising all their rights and obligations under the transaction documents. This document cannot be reproduced, except in full, without prior written approval of the Company. Any unauthorized alteration, forgery or falsification of the content or appearance of this document is unlawful and offenders may be prosecuted to the fullest extent of the law. Unless otherwise stated the results shown in this test report refer only to the sample(s) tested.

測試報告

Test Report

號碼(No.) : CE/2016/80913

日期(Date) : 2016/08/10

頁數(Page): 10 of 20

鈞均企業股份有限公司
SHYANGE PAINT CO., LTD.
桃園市大園區埔心村7鄰76號
NO. 76, 7LIN, PUHSIN VILL, TAYUAN DISTRICT, TAOYUAN CITY, TAIWAN, R. O. C.



測試項目 (Test Items)	單位 (Unit)	測試方法 (Method)	方法偵測 極限值 (MDL)	結果 (Result)
				No. 1
二氯二氟甲烷 / Dichlorodifluoromethane (CAS No. : 75-71-8)	mg/kg	參考US EPA 5021A (2014), 以氣相層 析/質譜儀檢測. / With reference to US EPA 5021A (2014). Analysis was performed by GC/MS.	10	n. d.
乙苯 / Ethylbenzene (CAS No. : 100- 41-4)	mg/kg	參考US EPA 5021A (2014), 以氣相層 析/質譜儀檢測. / With reference to US EPA 5021A (2014). Analysis was performed by GC/MS.	10	n. d.
六氯丁二烯 / Hexachlorobutadiene (CAS No. : 87-68-3)	mg/kg	參考US EPA 5021A (2014), 以氣相層 析/質譜儀檢測. / With reference to US EPA 5021A (2014). Analysis was performed by GC/MS.	10	n. d.
異丙基苯 / Isopropylbenzene (CAS No. : 98-82-8)	mg/kg	參考US EPA 5021A (2014), 以氣相層 析/質譜儀檢測. / With reference to US EPA 5021A (2014). Analysis was performed by GC/MS.	10	n. d.
二氯甲烷 / Dichloromethane (CAS No. : 75-09-2)	mg/kg	參考US EPA 5021A (2014), 以氣相層 析/質譜儀檢測. / With reference to US EPA 5021A (2014). Analysis was performed by GC/MS.	10	n. d.
萘 / Naphthalene (CAS No. : 91-20-3)	mg/kg	參考US EPA 5021A (2014), 以氣相層 析/質譜儀檢測. / With reference to US EPA 5021A (2014). Analysis was performed by GC/MS.	10	n. d.
正丁基苯 / n-Butylbenzene (CAS No. : 104-51-8)	mg/kg	參考US EPA 5021A (2014), 以氣相層 析/質譜儀檢測. / With reference to US EPA 5021A (2014). Analysis was performed by GC/MS.	10	n. d.

This document is issued by the Company subject to its General Conditions of Service printed overleaf, available on request or accessible at <http://www.sgs.com/en/Terms-and-Conditions.aspx> and, for electronic format documents, subject to Terms and Conditions for Electronic Documents at <http://www.sgs.com/en/Terms-and-Conditions/Termse-Documents.aspx>. Attention is drawn to the limitation of liability, indemnification and jurisdiction issues defined therein. Any holder of this document is advised that information contained hereon reflects the Company's findings at the time of its intervention only and within the limits of client's instruction, if any. The Company's sole responsibility is to its Client and this document does not exonerate parties to a transaction from exercising all their rights and obligations under the transaction documents. This document cannot be reproduced, except in full, without prior written approval of the Company. Any unauthorized alteration, forgery or falsification of the content or appearance of this document is unlawful and offenders may be prosecuted to the fullest extent of the law. Unless otherwise stated the results shown in this test report refer only to the sample(s) tested.

測試報告

Test Report

號碼(No.) : CE/2016/80913

日期(Date) : 2016/08/10

頁數(Page): 11 of 20

鈞均企業股份有限公司
SHYANGE PAINT CO., LTD.
桃園市大園區埔心村7鄰76號
NO. 76, 7LIN, PUHSIN VILL, TAYUAN DISTRICT, TAOYUAN CITY, TAIWAN, R. O. C.



測試項目 (Test Items)	單位 (Unit)	測試方法 (Method)	方法偵測 極限值 (MDL)	結果 (Result)
				No. 1
正丙基苯 / n-Propylbenzene (CAS No. : 103-65-1)	mg/kg	參考US EPA 5021A (2014), 以氣相層析/質譜儀檢測. / With reference to US EPA 5021A (2014). Analysis was performed by GC/MS.	10	n. d.
鄰-二甲苯 / o-Xylene (CAS No. : 95-47-6)	mg/kg	參考US EPA 5021A (2014), 以氣相層析/質譜儀檢測. / With reference to US EPA 5021A (2014). Analysis was performed by GC/MS.	10	n. d.
間,對-二甲苯 / m, p-Xylene (CAS No. : 108-38-3, 106-42-3)	mg/kg	參考US EPA 5021A (2014), 以氣相層析/質譜儀檢測. / With reference to US EPA 5021A (2014). Analysis was performed by GC/MS.	10	n. d.
對-異丙基甲苯 / p-Isopropyltoluene (CAS No. : 99-87-6)	mg/kg	參考US EPA 5021A (2014), 以氣相層析/質譜儀檢測. / With reference to US EPA 5021A (2014). Analysis was performed by GC/MS.	10	n. d.
2-甲基丙基苯 / sec-Butylbenzene (CAS No. : 135-98-8)	mg/kg	參考US EPA 5021A (2014), 以氣相層析/質譜儀檢測. / With reference to US EPA 5021A (2014). Analysis was performed by GC/MS.	10	n. d.
苯乙烯 / Styrene (CAS No. : 100-42-5)	mg/kg	參考US EPA 5021A (2014), 以氣相層析/質譜儀檢測. / With reference to US EPA 5021A (2014). Analysis was performed by GC/MS.	10	n. d.
2,2-二甲基乙基苯 / 2,2-tert-Butylbenzene (CAS No. : 98-06-6)	mg/kg	參考US EPA 5021A (2014), 以氣相層析/質譜儀檢測. / With reference to US EPA 5021A (2014). Analysis was performed by GC/MS.	10	n. d.

This document is issued by the Company subject to its General Conditions of Service printed overleaf, available on request or accessible at <http://www.sgs.com/en/Terms-and-Conditions.aspx> and, for electronic format documents, subject to Terms and Conditions for Electronic Documents at <http://www.sgs.com/en/Terms-and-Conditions/Termse-Documents.aspx>. Attention is drawn to the limitation of liability, indemnification and jurisdiction issues defined therein. Any holder of this document is advised that information contained hereon reflects the Company's findings at the time of its intervention only and within the limits of client's instruction, if any. The Company's sole responsibility is to its Client and this document does not exonerate parties to a transaction from exercising all their rights and obligations under the transaction documents. This document cannot be reproduced, except in full, without prior written approval of the Company. Any unauthorized alteration, forgery or falsification of the content or appearance of this document is unlawful and offenders may be prosecuted to the fullest extent of the law. Unless otherwise stated the results shown in this test report refer only to the sample(s) tested.

測試報告

Test Report

號碼(No.) : CE/2016/80913

日期(Date) : 2016/08/10

頁數(Page): 12 of 20

鈞均企業股份有限公司
SHYANGE PAINT CO., LTD.
桃園市大園區埔心村7鄰76號
NO. 76, 7LIN, PUHSIN VILL, TAYUAN DISTRICT, TAOYUAN CITY, TAIWAN, R. O. C.



測試項目 (Test Items)	單位 (Unit)	測試方法 (Method)	方法偵測 極限值 (MDL)	結果 (Result)
				No. 1
四氯乙烯 / Tetrachloroethene (CAS No.: 127-18-4)	mg/kg	參考US EPA 5021A (2014), 以氣相層析/質譜儀檢測. / With reference to US EPA 5021A (2014). Analysis was performed by GC/MS.	10	n. d.
甲苯 / Toluene (CAS No.: 108-88-3)	mg/kg	參考US EPA 5021A (2014), 以氣相層析/質譜儀檢測. / With reference to US EPA 5021A (2014). Analysis was performed by GC/MS.	10	n. d.
反-1,2-二氯乙烯 / trans-1,2-Dichloroethene (CAS No.: 156-60-5)	mg/kg	參考US EPA 5021A (2014), 以氣相層析/質譜儀檢測. / With reference to US EPA 5021A (2014). Analysis was performed by GC/MS.	10	n. d.
反-1,3-二氯丙烯 / trans-1,3-Dichloropropene (CAS No.: 10061-02-6)	mg/kg	參考US EPA 5021A (2014), 以氣相層析/質譜儀檢測. / With reference to US EPA 5021A (2014). Analysis was performed by GC/MS.	10	n. d.
三氯乙烯 / Trichloroethylene (CAS No.: 79-01-6)	mg/kg	參考US EPA 5021A (2014), 以氣相層析/質譜儀檢測. / With reference to US EPA 5021A (2014). Analysis was performed by GC/MS.	10	n. d.
三氯一氟甲烷 / Trichlorofluoromethane (CAS No.: 75-69-4)	mg/kg	參考US EPA 5021A (2014), 以氣相層析/質譜儀檢測. / With reference to US EPA 5021A (2014). Analysis was performed by GC/MS.	10	n. d.
氯乙烯 / Vinyl chloride (CAS No.: 75-01-4)	mg/kg	參考US EPA 5021A (2014), 以氣相層析/質譜儀檢測. / With reference to US EPA 5021A (2014). Analysis was performed by GC/MS.	10	n. d.

This document is issued by the Company subject to its General Conditions of Service printed overleaf, available on request or accessible at <http://www.sgs.com/en/Terms-and-Conditions.aspx> and, for electronic format documents, subject to Terms and Conditions for Electronic Documents at <http://www.sgs.com/en/Terms-and-Conditions/Termse-Documents.aspx>. Attention is drawn to the limitation of liability, indemnification and jurisdiction issues defined therein. Any holder of this document is advised that information contained hereon reflects the Company's findings at the time of its intervention only and within the limits of client's instruction, if any. The Company's sole responsibility is to its Client and this document does not exonerate parties to a transaction from exercising all their rights and obligations under the transaction documents. This document cannot be reproduced, except in full, without prior written approval of the Company. Any unauthorized alteration, forgery or falsification of the content or appearance of this document is unlawful and offenders may be prosecuted to the fullest extent of the law. Unless otherwise stated the results shown in this test report refer only to the sample(s) tested.

測試報告

Test Report

號碼(No.) : CE/2016/80913

日期(Date) : 2016/08/10

頁數(Page): 13 of 20

鈞均企業股份有限公司
SHYANGE PAINT CO., LTD.
桃園市大園區埔心村7鄰76號



NO. 76, 7LIN, PUHSIN VILL, TAYUAN DISTRICT, TAOYUAN CITY, TAIWAN, R. O. C.

備註(Note) :

1. mg/kg = ppm ; 0.1wt% = 1000ppm
2. n. d. = Not Detected (未檢出)
3. MDL = Method Detection Limit (方法偵測極限值)
4. "-" = Not Regulated (無規格值)
5. ***: 該物質是由三丁基錫之測試結果計算得知. 其MDL是針對三丁基錫之評估. (The substance was calculated by the test results of Tributyl Tin. The MDL was evaluated for Tributyl Tin.)
6. 參數換算表 / Parameter Conversion Table :
Please refer to http://twap.sgs.com/sgsrsts/chn/download-REACH_tw.asp

測試報告 Test Report

號碼(No.) : CE/2016/80913

日期(Date) : 2016/08/10

頁數(Page): 14 of 20

鈞均企業股份有限公司
SHYANGE PAINT CO., LTD.
桃園市大園區埔心村7鄰76號
NO. 76, 7LIN, PUHSIN VILL, TAYUAN DISTRICT, TAOYUAN CITY, TAIWAN, R. O. C.

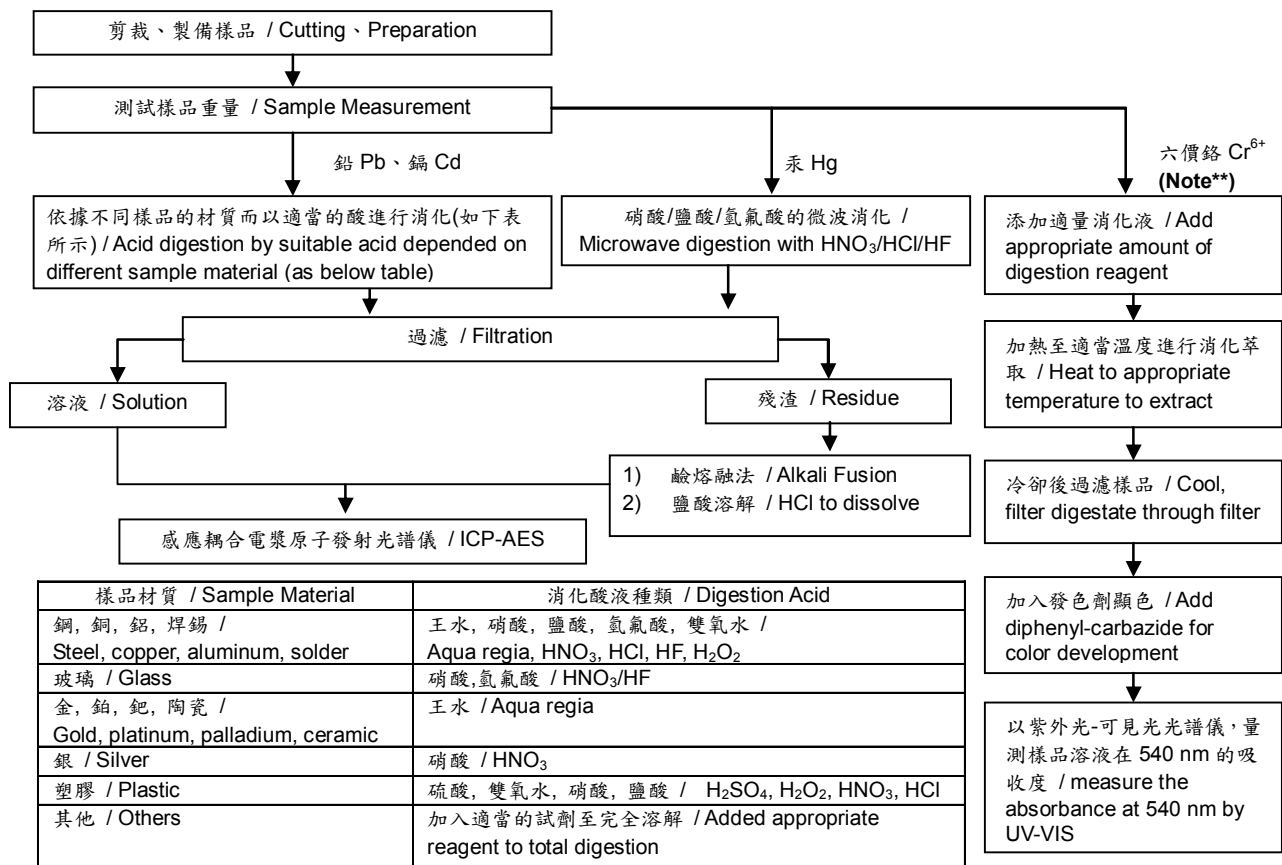


重金屬流程圖 / Analytical flow chart of Heavy Metal (IEC 62321)

根據以下的流程圖之條件，樣品已完全溶解。(六價鉻測試方法除外)

These samples were dissolved totally by pre-conditioning method according to below flow chart. (Cr⁶⁺ test method excluded)

- 測試人員：王志璋 / Technician : JR Wang
- 測試負責人：張啟興 / Supervisor: Troy Chang



Note** (For IEC 62321)

- (1) 針對非金屬材料加入鹼性消化液，加熱至 90~95°C 萃取。 / For non-metallic material, add alkaline digestion reagent and heat to 90~95°C.
- (2) 針對金屬材料加入純水，加熱至沸騰萃取。 / For metallic material, add pure water and heat to boiling.

測試報告 Test Report

號碼(No.) : CE/2016/80913

日期(Date) : 2016/08/10

頁數(Page): 15 of 20

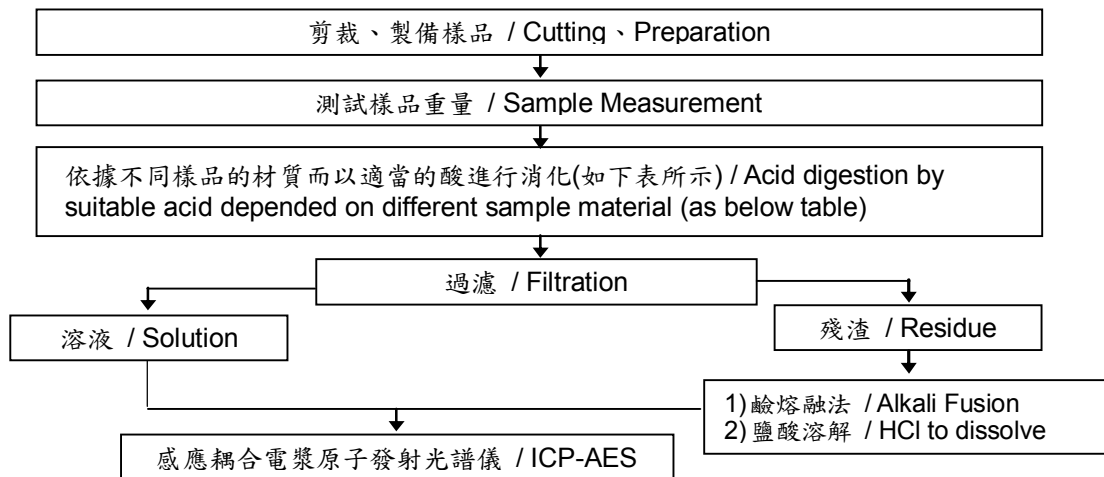
鈞均企業股份有限公司
SHYANGE PAINT CO., LTD.
桃園市大園區埔心村7鄰76號
NO. 76, 7LIN, PUHSIN VILL, TAYUAN DISTRICT, TAOYUAN CITY, TAIWAN, R. O. C.



根據以下的流程圖之條件，樣品已完全溶解。 / These samples were dissolved totally by pre-conditioning method according to below flow chart.

- 測試人員：王志瑋 / Technician: JR Wang
- 測試負責人：張啟興 / Supervisor: Troy Chang

元素以 ICP-AES 分析的消化流程圖
(Flow Chart of digestion for the elements analysis performed by ICP-AES)



鋼,銅,鋁,焊錫 / Steel, copper, aluminum, solder	王水,硝酸,鹽酸,氫氟酸,雙氧水 / Aqua regia, HNO ₃ , HCl, HF, H ₂ O ₂
玻璃 / Glass	硝酸,氫氟酸 / HNO ₃ /HF
金,鉑,鈀,陶瓷 / Gold, platinum, palladium, ceramic	王水 / Aqua regia
銀 / Silver	硝酸 / HNO ₃
塑膠 / Plastic	硫酸,雙氧水,硝酸,鹽酸 / H ₂ SO ₄ , H ₂ O ₂ , HNO ₃ , HCl
其他 / Others	加入適當的試劑至完全溶解 / Added appropriate reagent to total digestion

測試報告 Test Report

號碼(No.) : CE/2016/80913

日期(Date) : 2016/08/10

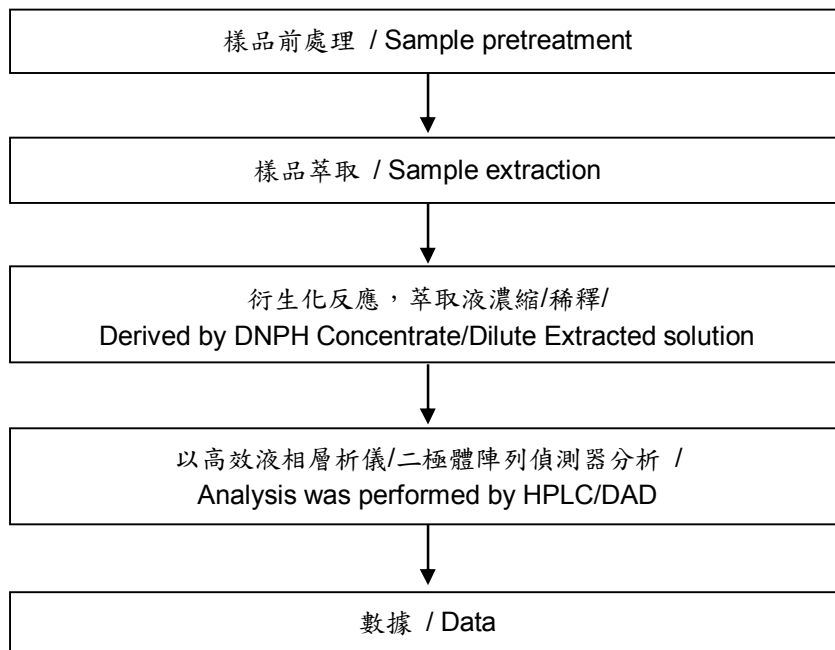
頁數(Page): 16 of 20

鈞均企業股份有限公司
SHYANGE PAINT CO., LTD.
桃園市大園區埔心村7鄰76號
NO. 76, 7LIN, PUHSIN VILL, TAYUAN DISTRICT, TAOYUAN CITY, TAIWAN, R. O. C.



甲醛分析流程圖 / Analytical flow chart - Formaldehyde

- 測試人員：涂雅苓 / Technician: Yaling Tu
- 測試負責人：張啟興 / Supervisor: Troy Chang



This document is issued by the Company subject to its General Conditions of Service printed overleaf, available on request or accessible at <http://www.sgs.com/en/Terms-and-Conditions.aspx> and, for electronic format documents, subject to Terms and Conditions for Electronic Documents at <http://www.sgs.com/en/Terms-and-Conditions/Termse-Document.aspx>. Attention is drawn to the limitation of liability, indemnification and jurisdiction issues defined therein. Any holder of this document is advised that information contained hereon reflects the Company's findings at the time of its intervention only and within the limits of client's instruction, if any. The Company's sole responsibility is to its Client and this document does not exonerate parties to a transaction from exercising all their rights and obligations under the transaction documents. This document cannot be reproduced, except in full, without prior written approval of the Company. Any unauthorized alteration, forgery or falsification of the content or appearance of this document is unlawful and offenders may be prosecuted to the fullest extent of the law. Unless otherwise stated the results shown in this test report refer only to the sample(s) tested.

測試報告 Test Report

號碼(No.) : CE/2016/80913

日期(Date) : 2016/08/10

頁數(Page): 17 of 20

鈞均企業股份有限公司
SHYANGE PAINT CO., LTD.
桃園市大園區埔心村7鄰76號

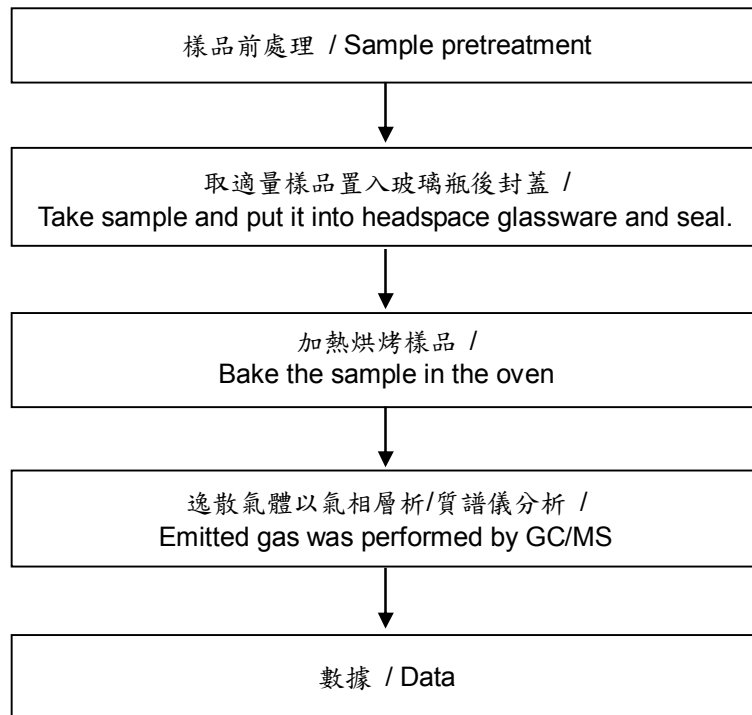
NO. 76, 7LIN, PUHSIN VILL, TAYUAN DISTRICT, TAOYUAN CITY, TAIWAN, R. O. C.



揮發性有機化合物分析流程圖 / Analytical flow chart - volatile organic compounds (VOCs)

- 測試人員：吳椿景 / Technician : Chun Wu
- 測試負責人：陳新智 / Supervisor : Shinjyh Chen

【參考方法(Reference method) : US EPA 5021, 5021A】



測試報告 Test Report

號碼(No.) : CE/2016/80913

日期(Date) : 2016/08/10

頁數(Page): 18 of 20

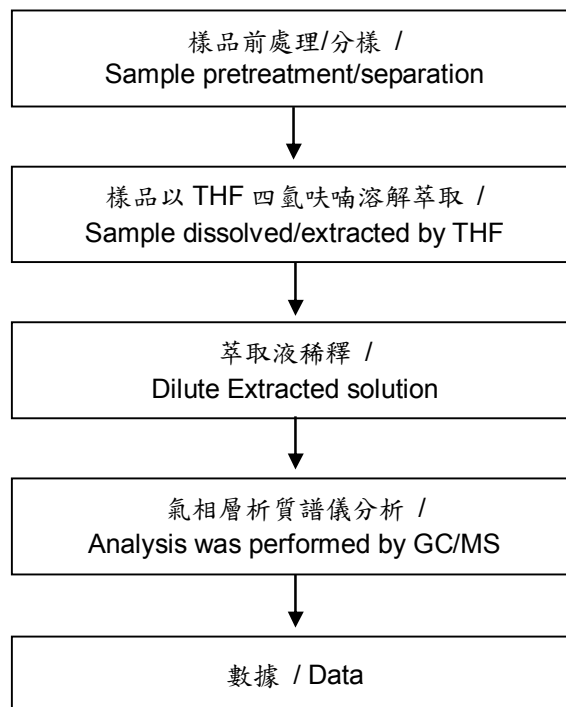
鈞均企業股份有限公司
SHYANGE PAINT CO., LTD.
桃園市大園區埔心村7鄰76號
NO. 76, 7LIN, PUHSIN VILL, TAYUAN DISTRICT, TAOYUAN CITY, TAIWAN, R. O. C.



可塑劑分析流程圖 / Analytical flow chart - Phthalate

- 測試人員：徐毓明 / Technician: Andy Shu
- 測試負責人：張啟興 / Supervisor : Troy Chang

【測試方法/Test method: IEC 62321-8】



測試報告 Test Report

號碼(No.) : CE/2016/80913

日期(Date) : 2016/08/10

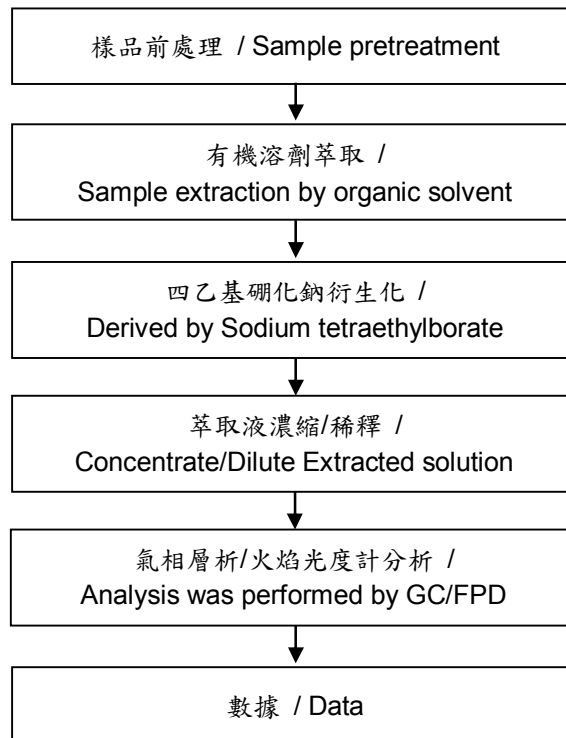
頁數(Page): 19 of 20

鈞均企業股份有限公司
SHYANGE PAINT CO., LTD.
桃園市大園區埔心村7鄰76號
NO. 76, 7LIN, PUHSIN VILL, TAYUAN DISTRICT, TAOYUAN CITY, TAIWAN, R. O. C.



有機錫分析流程圖 / Analytical flow chart - Organic-Tin

- 測試人員：涂雅苓 / Technician: Yaling Tu
- 測試負責人：張啟興 / Supervisor: Troy Chang



This document is issued by the Company subject to its General Conditions of Service printed overleaf, available on request or accessible at <http://www.sgs.com/en/Terms-and-Conditions.aspx> and, for electronic format documents, subject to Terms and Conditions for Electronic Documents at <http://www.sgs.com/en/Terms-and-Conditions/Termse-Document.aspx>. Attention is drawn to the limitation of liability, indemnification and jurisdiction issues defined therein. Any holder of this document is advised that information contained hereon reflects the Company's findings at the time of its intervention only and within the limits of client's instruction, if any. The Company's sole responsibility is to its Client and this document does not exonerate parties to a transaction from exercising all their rights and obligations under the transaction documents. This document cannot be reproduced, except in full, without prior written approval of the Company. Any unauthorized alteration, forgery or falsification of the content or appearance of this document is unlawful and offenders may be prosecuted to the fullest extent of the law. Unless otherwise stated the results shown in this test report refer only to the sample(s) tested.

測試報告

Test Report

號碼(No.) : CE/2016/80913

日期(Date) : 2016/08/10

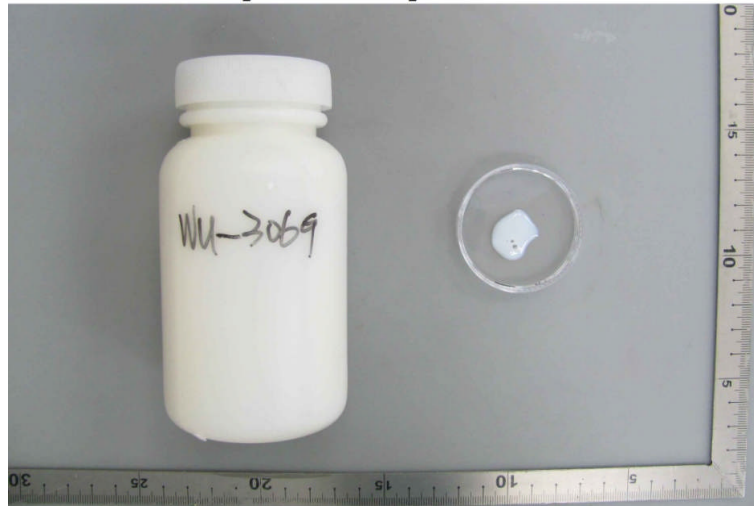
頁數(Page): 20 of 20

鈞均企業股份有限公司
SHYANGE PAINT CO., LTD.
桃園市大園區埔心村7鄰76號
NO. 76, 7LIN, PUHSIN VILL, TAYUAN DISTRICT, TAOYUAN CITY, TAIWAN, R. O. C.



* 照片中如有箭頭標示，則表示為實際檢測之樣品/部位。 *
(The tested sample / part is marked by an arrow if it's shown on the photo.)

CE/2016/80913



** 報告結尾 (End of Report) **